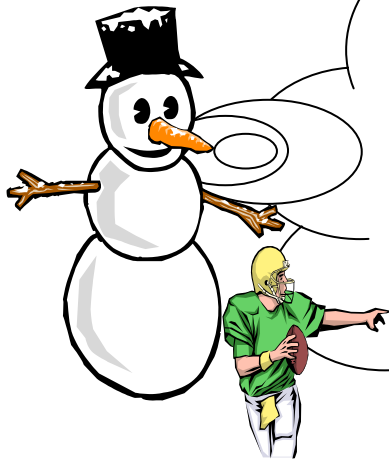
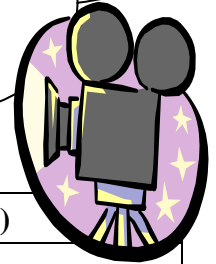


# Jockey Club Life-wide Learning Fund



『S1 to S7』 students who cannot afford life-wide learning programmes / activities organized by the school, **you can apply the Jockey Club Life-wide Learning Fund.** Application forms are available at the General Office. Fund will be given to those students who are either receiving the 『Comprehensive Social Security Assistance (CSSA)』 or eligible for the 『Student Financial Assistance Agency (SFAA)』 . (The following table is only for reference)



	<b>Funding will be provided for the following activities (examples)</b>
Whole-school activities	<ul style="list-style-type: none"> <li>✧ Transportation fee for school picnic;</li> <li>✧ camp fee for Leadership Training Camp;</li> <li>✧ course fees for all types of non-academic training courses;</li> <li>✧ materials fee for carrying out projects, etc.</li> </ul>
House-based activities	Uniform for cheering team member
School-team activities (e.g., band, ball teams, etc.)	Training fee, uniform fee, transportation fee and rental fees for sports ground, , etc.
Subject-based activities	<ul style="list-style-type: none"> <li>✧ Entrance fee and transportation fee for all visits organized by the school, e.g., Art Gallery, Hong Kong Museum, etc.;</li> <li>✧ Entrance fees for School Speech Festival and School Music Festival;</li> </ul>
Club-based activities	<ul style="list-style-type: none"> <li>✧ Course fees for Taekwondo Class and Instrumental Group;</li> <li>✧ Material fee for Flower Making Club and Clay Making Club;</li> <li>✧ Uniform fees for Red Cross Youth Group and Girl Guides;</li> <li>✧ Transportation fee for all visits organized by different clubs;</li> <li>✧ Fee for camping activities organized by different clubs, etc.</li> </ul>
Others	<ul style="list-style-type: none"> <li>✧ Program fee and transportation fee for S3 Eyes on the Community Social Service Program;</li> <li>✧ Activities organized by Big Sisters, PTA, Students' Association, etc.</li> <li>✧ Tickets for ballet, drama, orchestra, and other performance that are recommended by the school (only restricted to the cheapest ticket)</li> <li>✧ All non-academic activities recommended by the school</li> </ul>
<b>No funding will be provided for food and drinks (e.g., Barbecue, Tea Party, etc).</b>	